

# The History of American Decorative Arts



Hudson 1 2/20/16

# Style, Form, Function





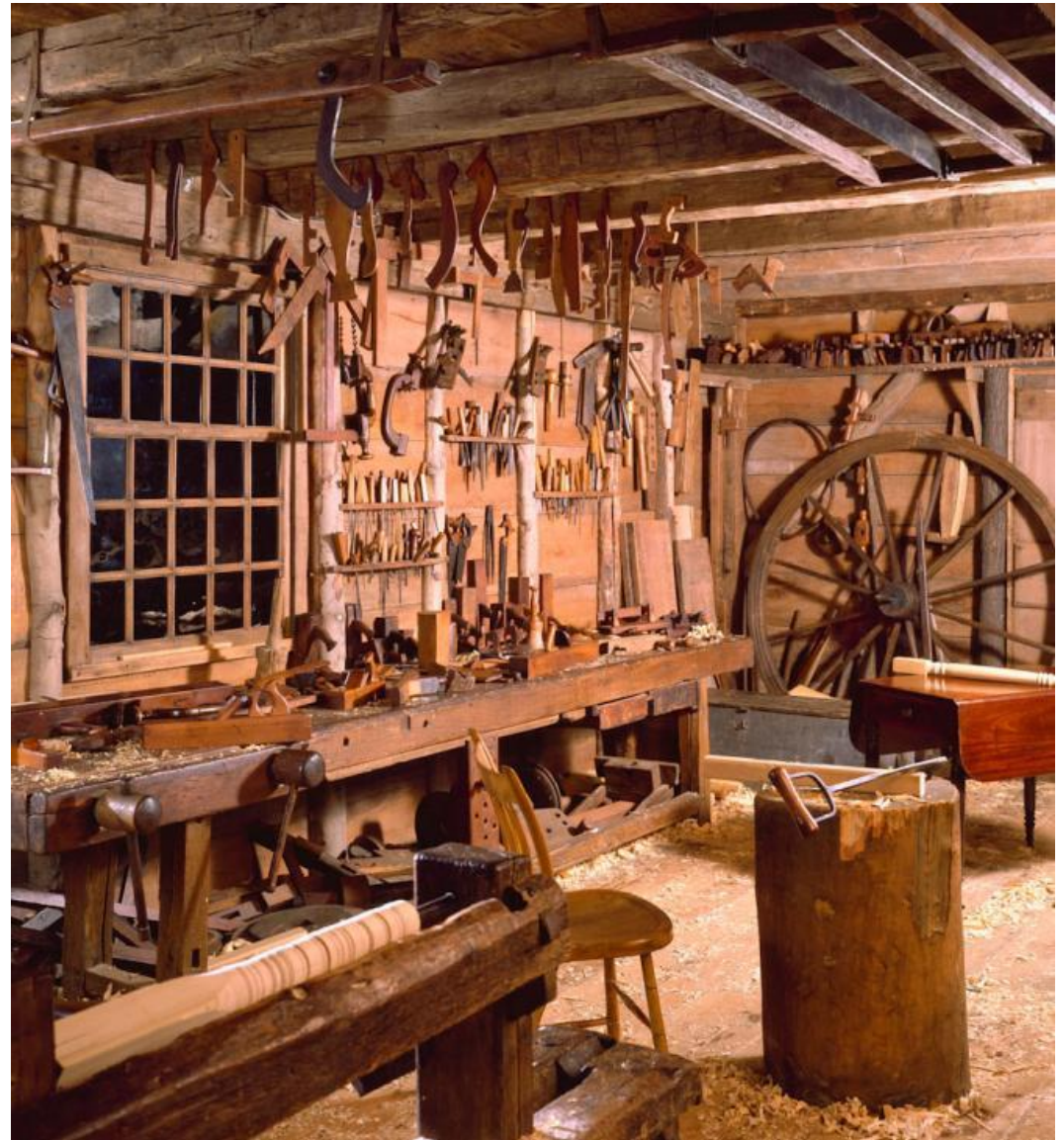
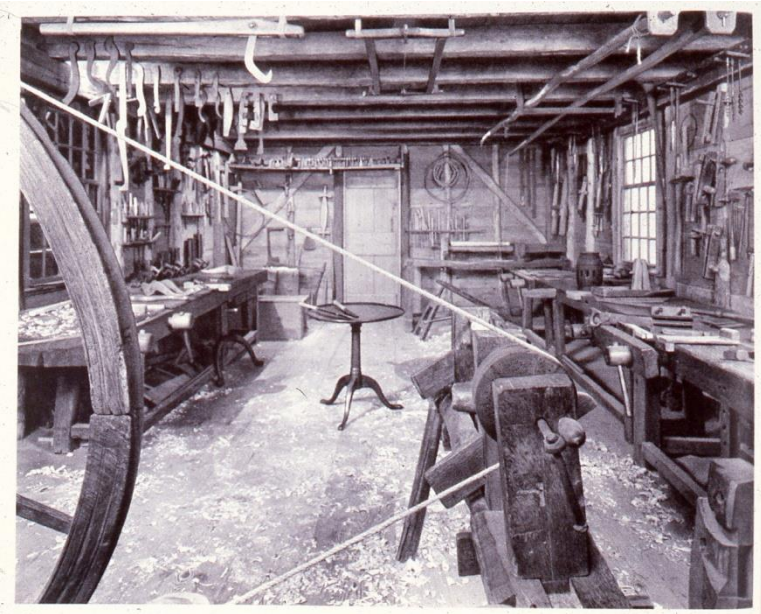


Joined /  
Joiner



Case / cabinetmaker

# Dominy Shop in East Hampton LI 1765-1868

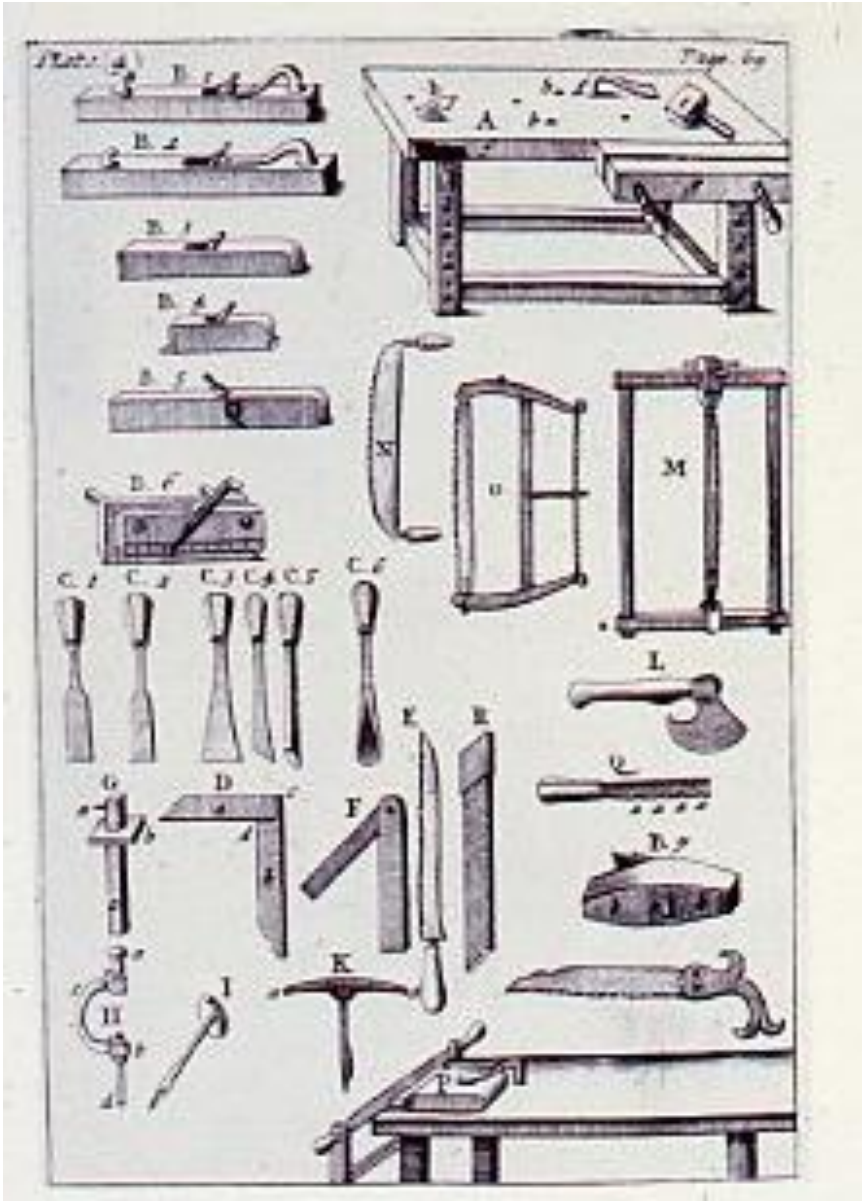




# Moxon's Mechanick Exercises

1703

“Joiner's work”



Balusters and  
spindles  
New England  
17<sup>th</sup> c



Relief  
carving

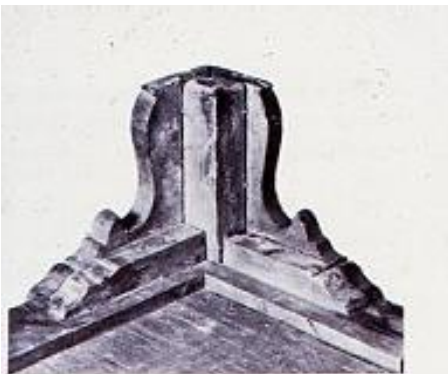


Federal inlay





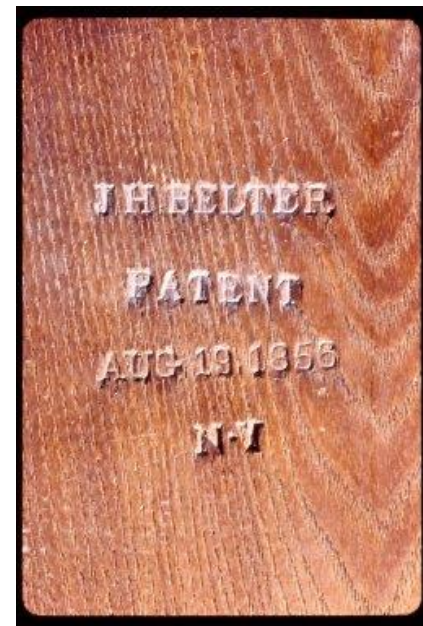
Chalk writing  
“Levi Colby Heniker NH 1803”



Ill-15. Front Foot of Desk No. 49. Boston area, 1785-1805. A bracket foot and supporting glue blocks.



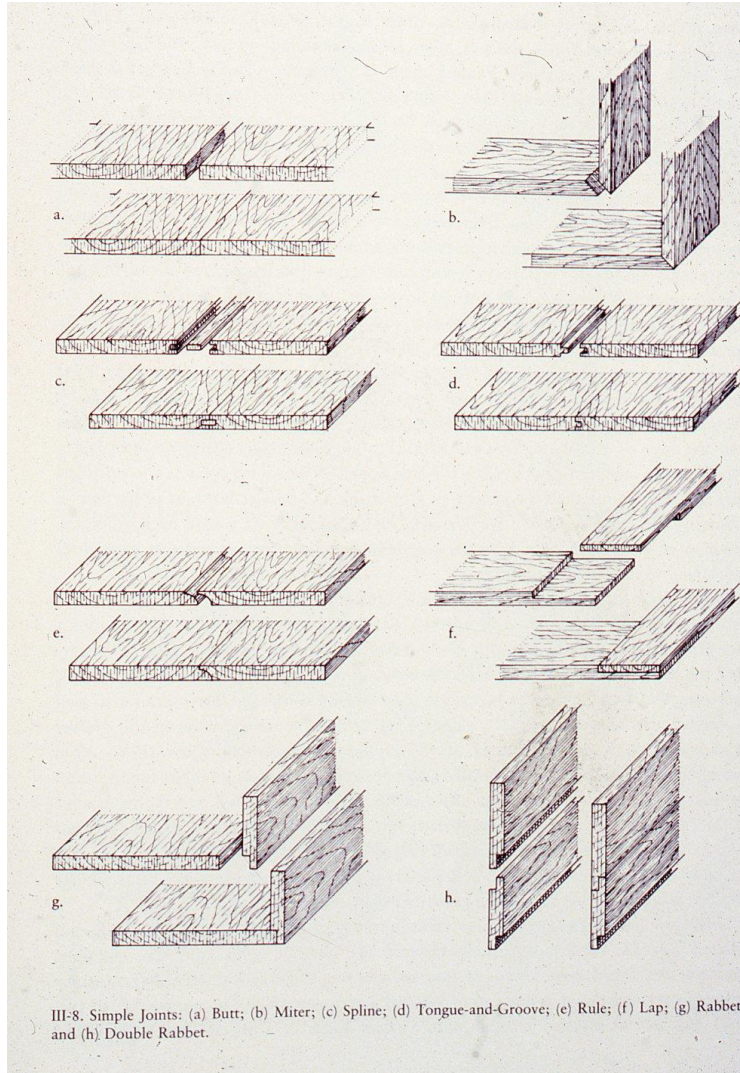
Ill-16. Front Foot of Desk and Bookcase No. 51. Boston, 1770-1790. A claw-and-ball foot and supporting glue blocks.



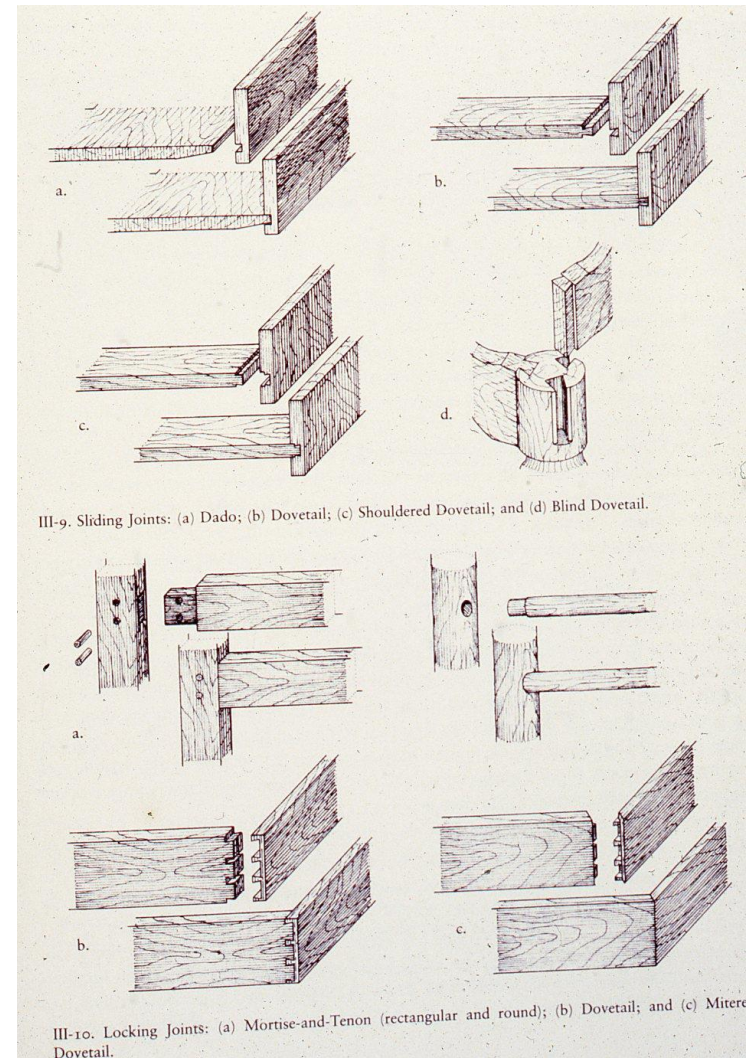
Stamp  
“J H Belter Patent Aug 19  
1856 NY”

Blocking on 18c desks

# Simple joints



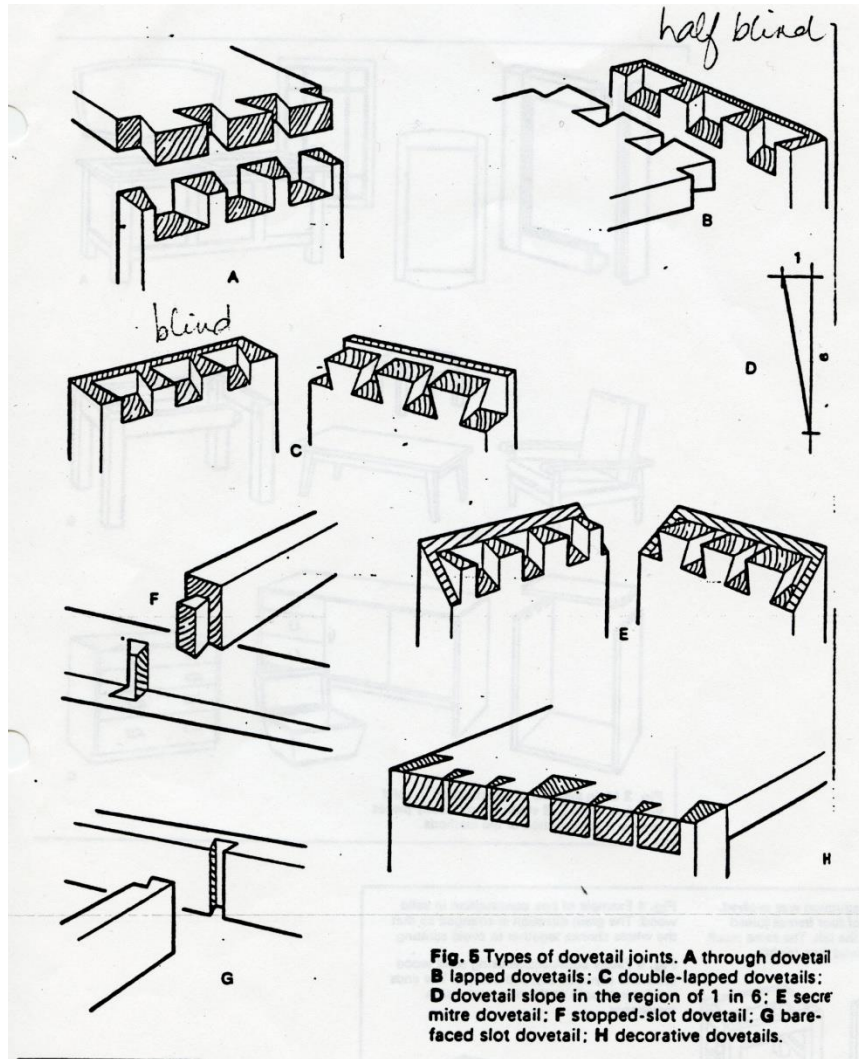
# Sliding joints



# Locking joints



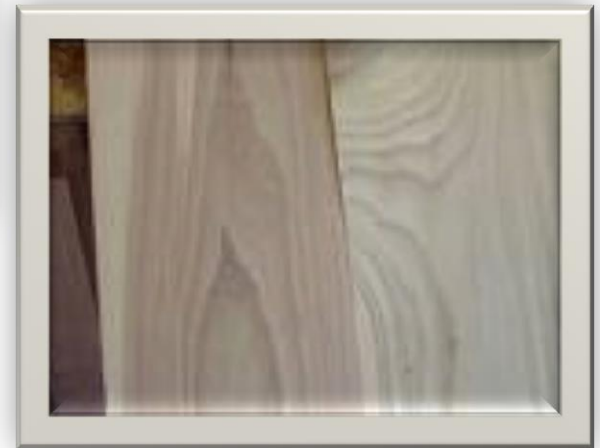
## Dovetail Joints



# Woods

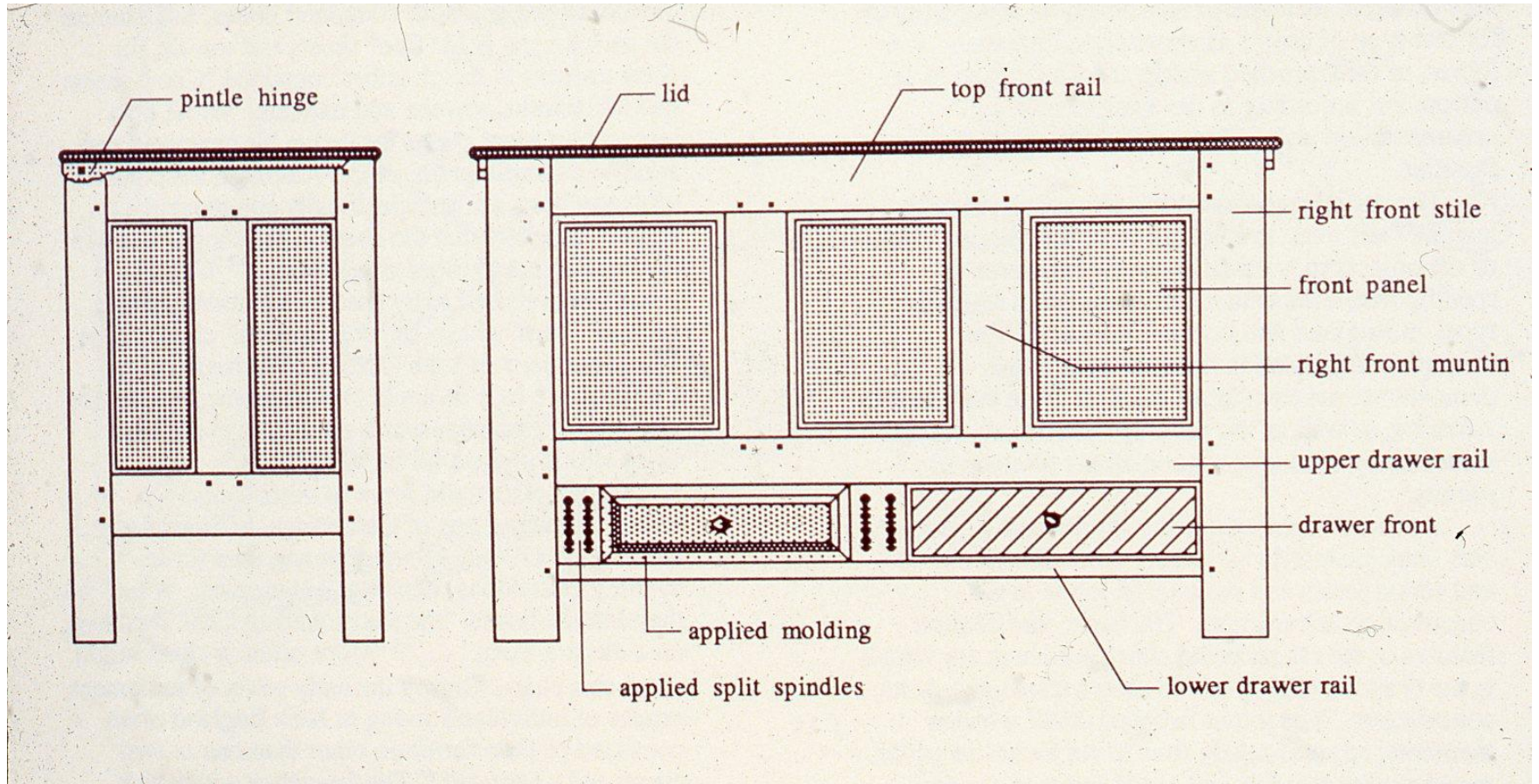
Primary and secondary  
means outside and inside,

not quantity  
or quality

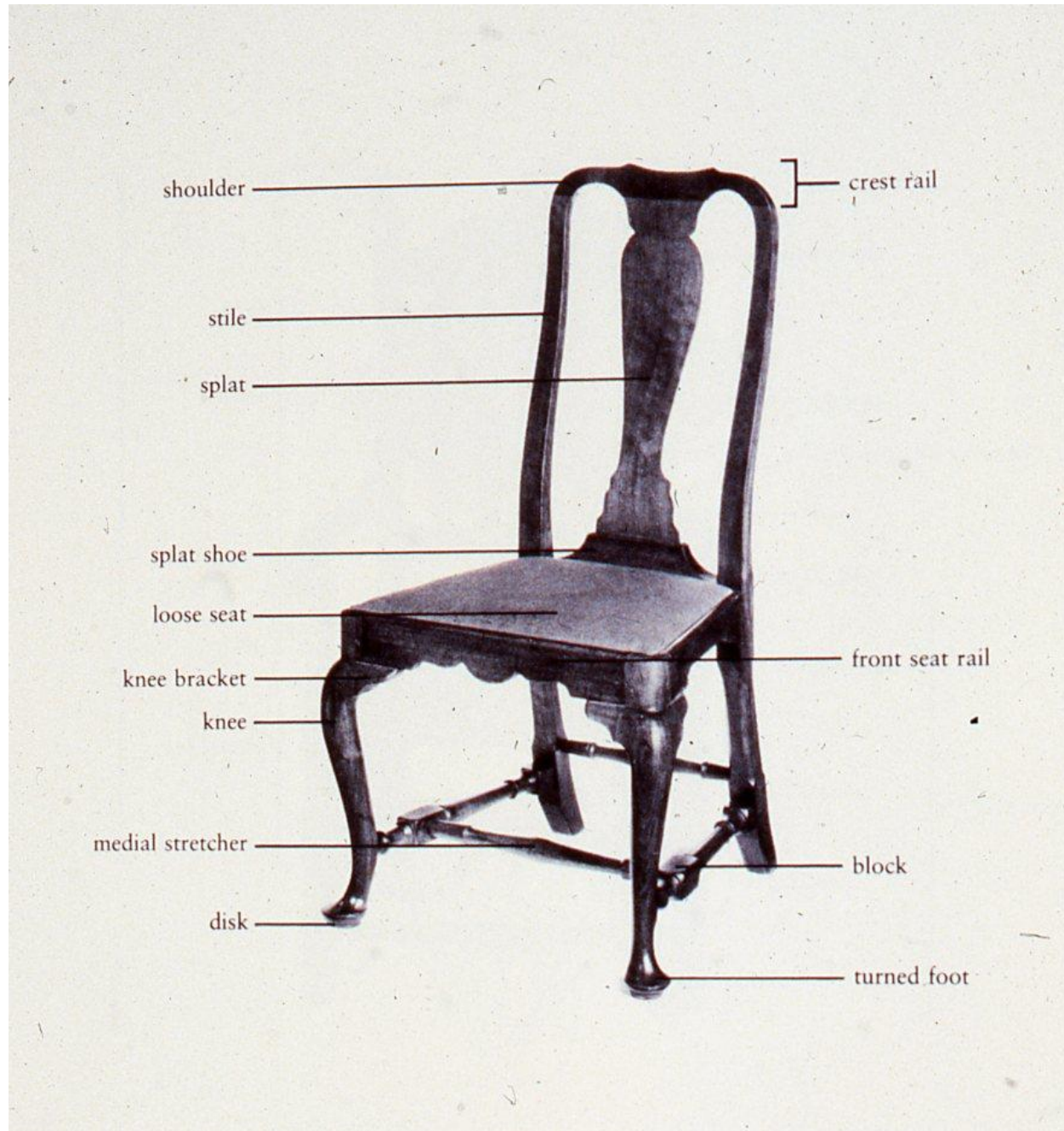




# Joined panel chest with drawer 17<sup>th</sup> c

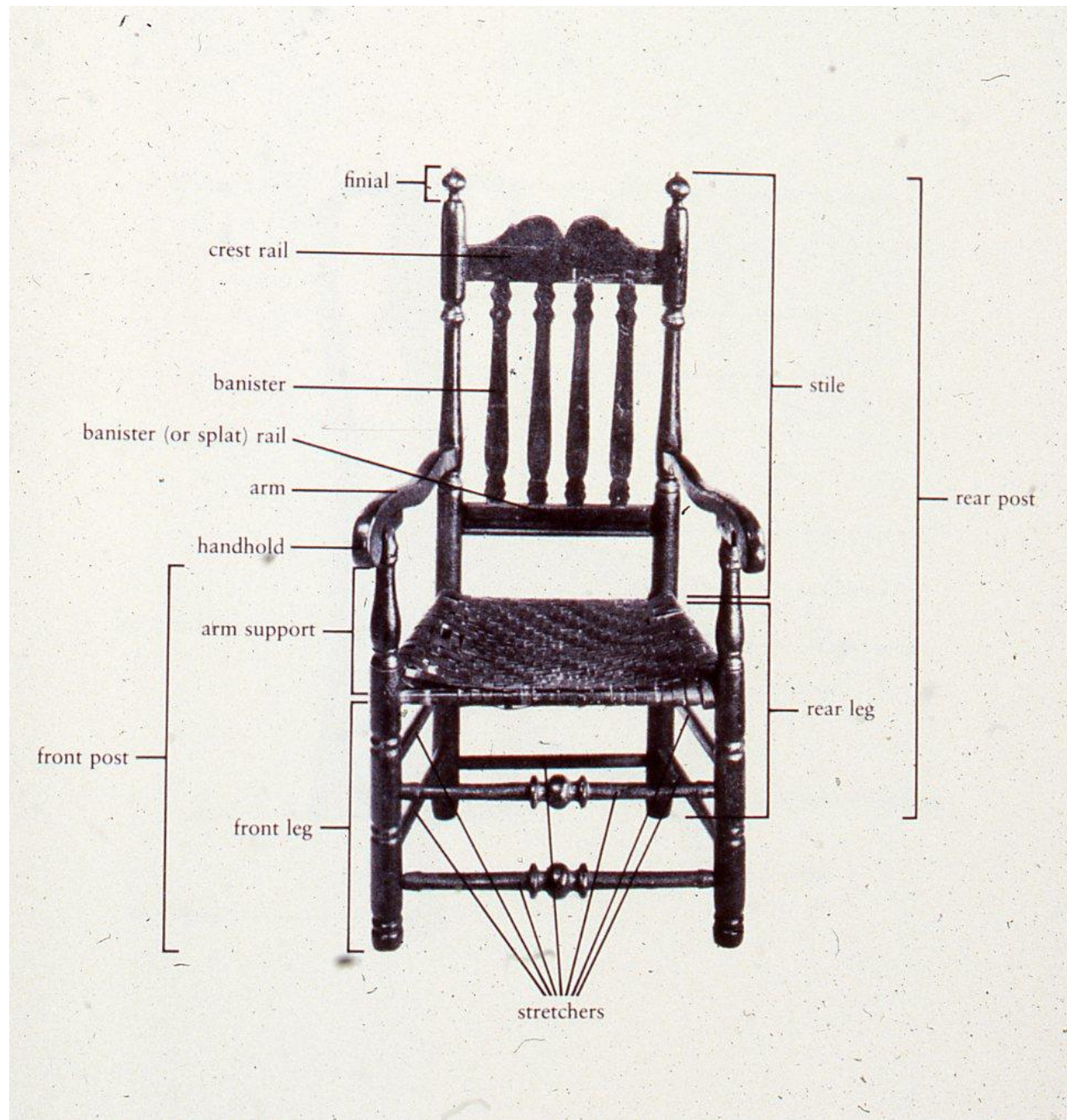


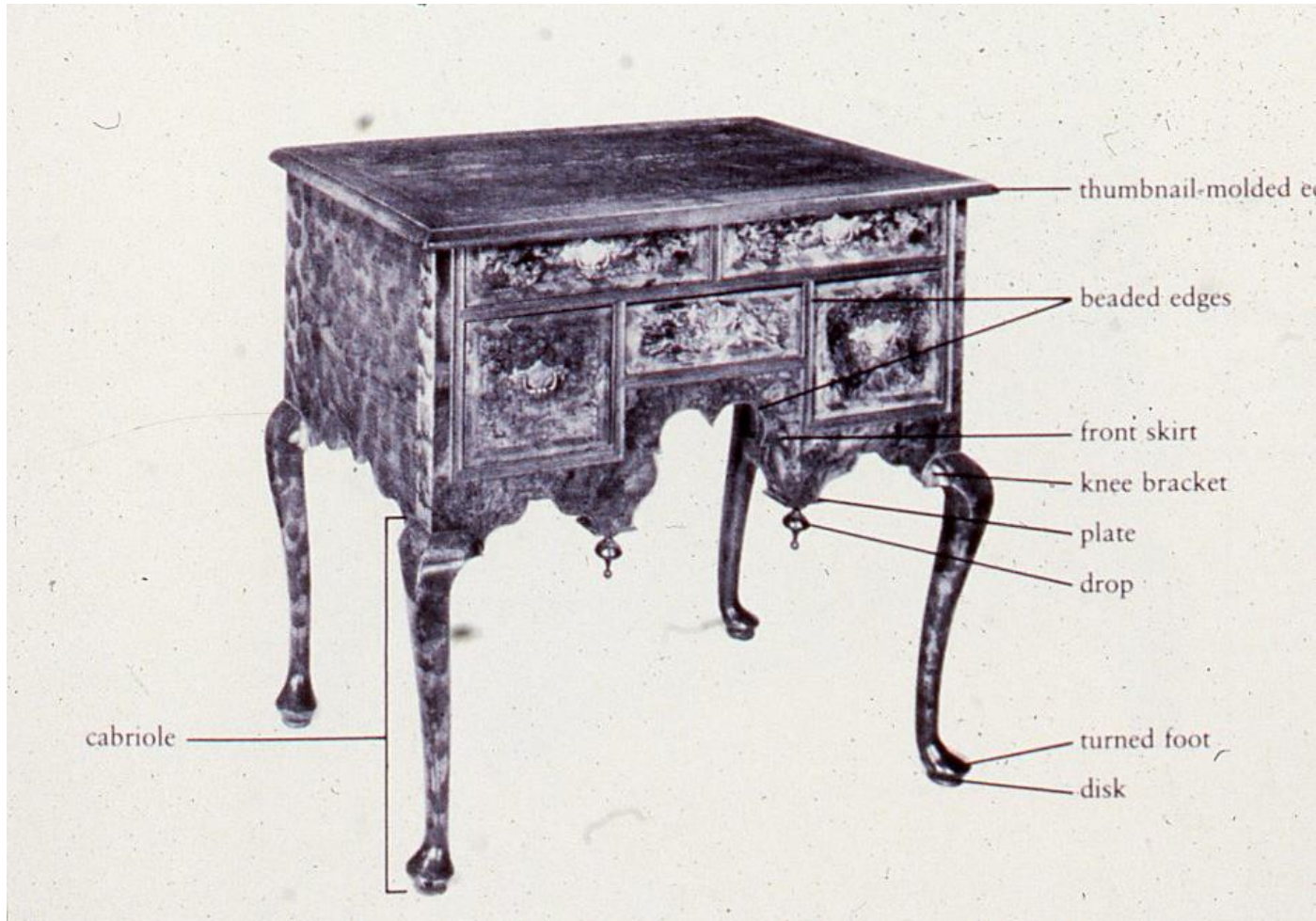
# Side chair





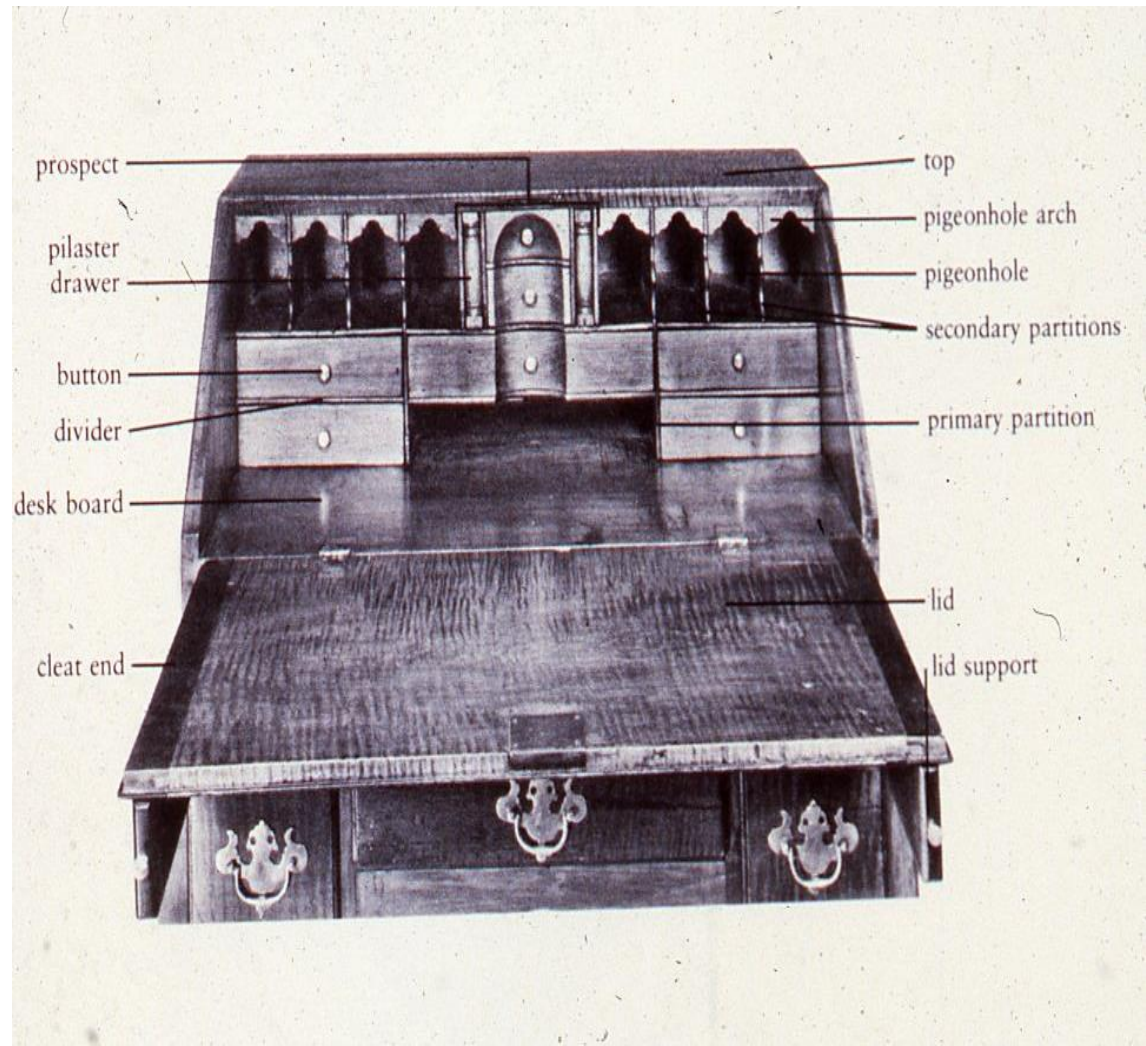
# ArmChair





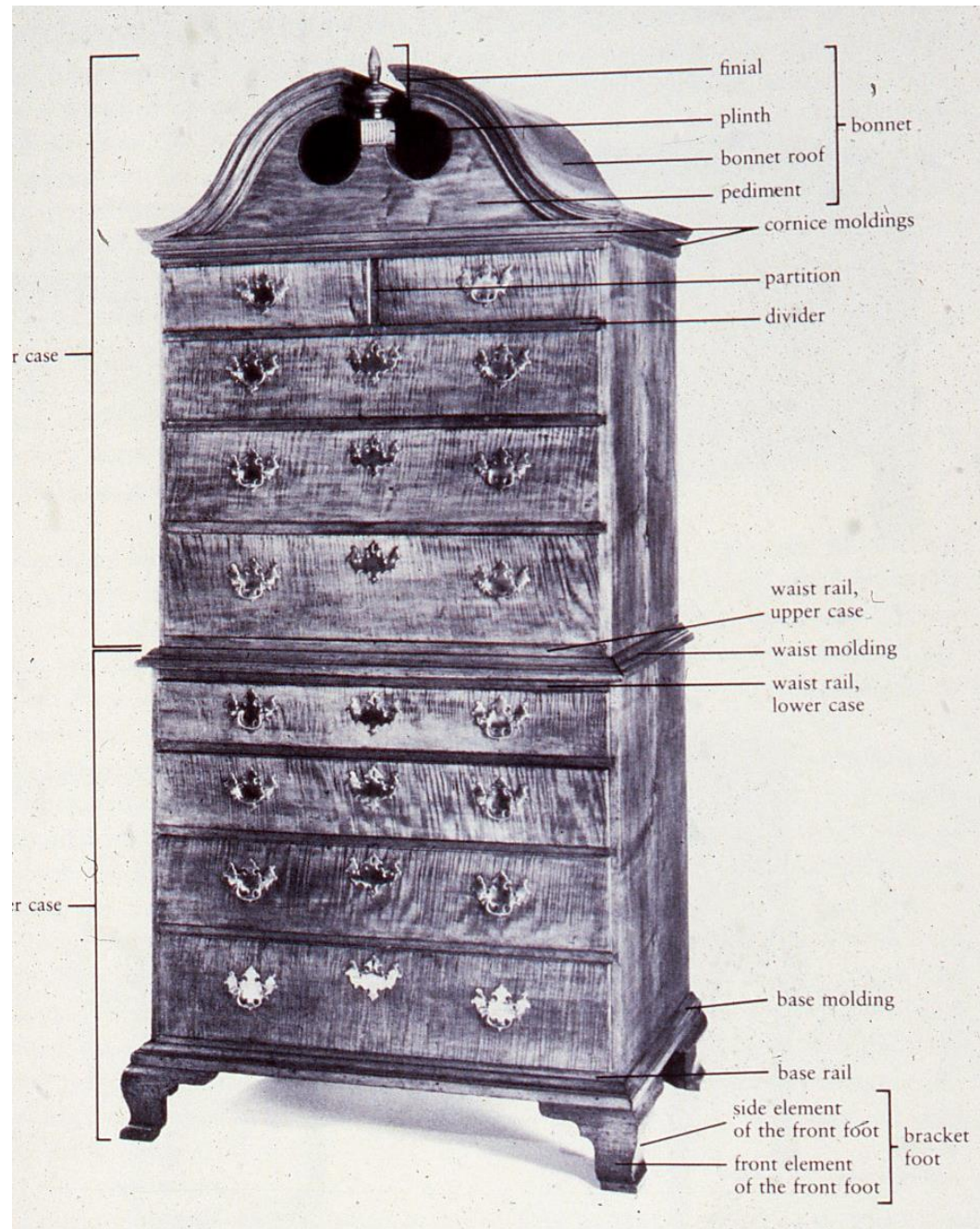
dressing table





Desk

# Chest on chest





# Settlement of the English Colonies



17<sup>th</sup> century 1640-1700

Jacobean= James (King) 1600-50

Renaissance

Restoration to 1660

Medieval



- *Bulbous supports,*
- *shallow strap-work carving,*
- *palmate panels,*
- *turned members,*
- *applied decoration,*
- *chip carving,*
- *some paint,*
- *mostly oak,*
- *heavy and simple*









Joined stand  
c. 1710  
Charleston SC  
cypress



Joint stool  
c. 1640-80  
New England  
oak

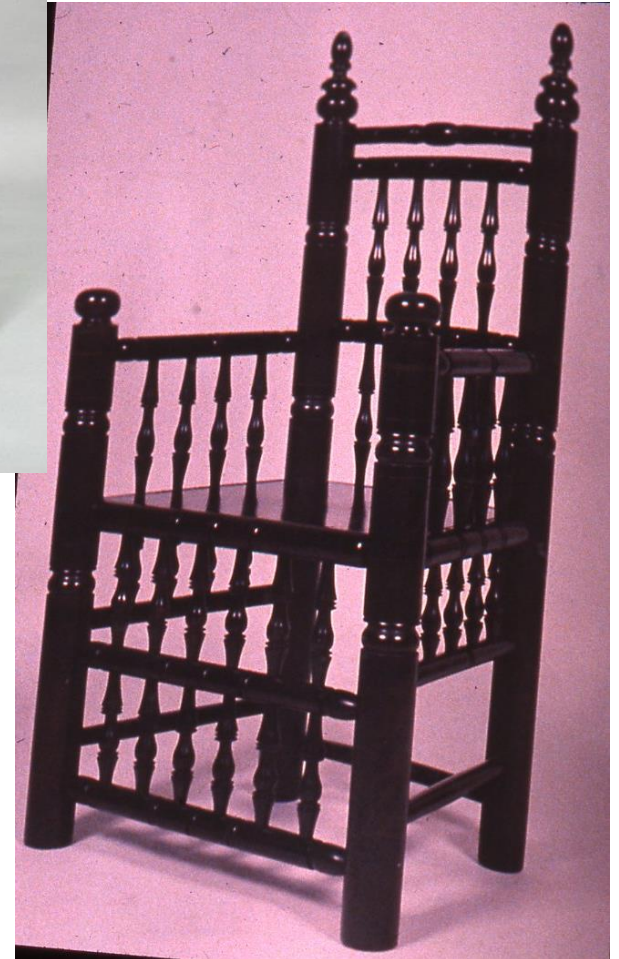




Turned arm chair c. 1650-1700  
New England



Turned arm chair  
Massachusetts Bay  
Colony



Wainscot (Panel) Chair

1660-75

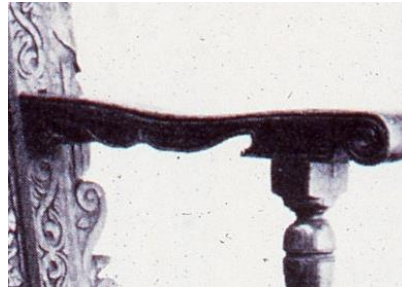
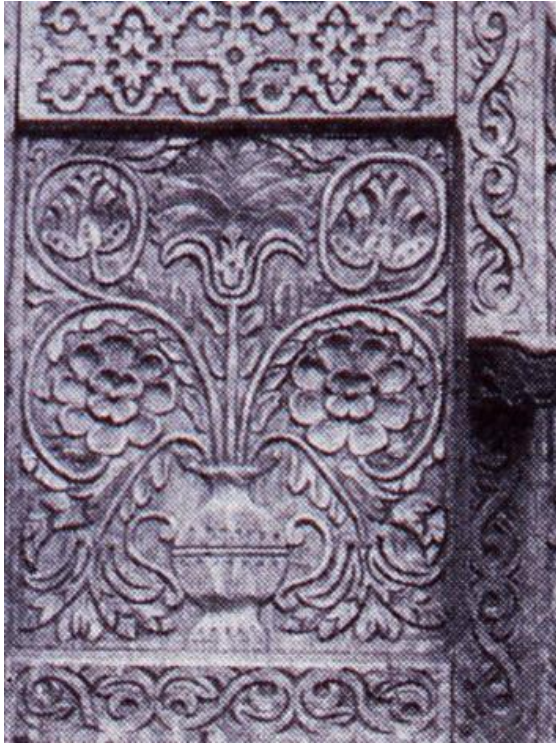
Mass. Bay Colony

Owned by Gov. Winthrop





Arm chair, wainscot 1663-67 Ipswich MA  
(*attr Wm. Searle*) oak



Relief carving,  
strapwork carving



Bowdoin College





Couch, turkey work c.  
1698 Boston MA  
maple, oak

*Turkey-Work Couch*

Armchair 1660-70 Boston MA  
Leather, oak, maple with cushion



Chair 1660-90  
Cromwellian type  
Boston MA  
maple, oak,  
leather



PHOTOGRAPH BY WADHAMS/MAHAFFEY





Chest, blanket with  
panels 1680-1700  
Scituate MA red oak



Chest, raised panel VA or NC c. 1700 walnut



Chest, blanket c. 1650 Dedham MA  
*attr John Houghton* oak, pine







Chest, 1670-1700 Ipswich MA painted,  
*Searle-Dennis shop*



Spice chest "TH 1679"  
Ipswich MA belonged to  
Thomas Hart



Blanket Chest with drawer  
17<sup>th</sup> c  
MA perhaps Salem







bosses

Two-drawer  
blanket chest

1686-1700  
Wethersfield C

“WA/SR”  
oak, pine



Chest with drawers 1680-1710  
Wethersfield CT





Court cupboard,  
Chesapeake  
VA c. 1640-60  
white oak,  
walnut, pine



Court cupboard, 1680-1700  
Newbury MA  
oak, pine, maple





Chest, Hadley type CT  
River Valley (at CMA)  
Hadley tulips



Hadley Chest c1690-  
1700 "HM"  
Hadley MA



# WILLIAM & MARY STYLE

1690-1720/30

- *1660 Restoration of Charles II*
- *Walnut, poplar, maple, ash*
- *More vertical design*
- *Holland influence of Queen Catherine—  
Flemish scroll*
- *China trade led to cane, veneer, tea drinking*
- *Leading colonial center = Boston*
- *Carved stretchers, flat and shaped; shaped  
skirts, more drawers*
- *Features: Trumpet turnings, ram's horn  
handholds, ovolo molding, drop pulls or  
wooden knobs*

Flock Room from Morattico Hall c. 1715  
Richmond VA  
Morattico Hall







William & Mary Room  
American Wing, Metropolitan  
Museum in NY

“Spanish foot” or paintbrush foot,  
dressing table leg c. 1720 NJ



3 side chairs  
1715 Boston

1724-35 Boston

1730-55

Newport







Armchair 1685-1705 CT  
walnut, cane



Armchair 1690-1710 CT beech, cane







Easy Chairs  
Or Upholstered  
Armchairs



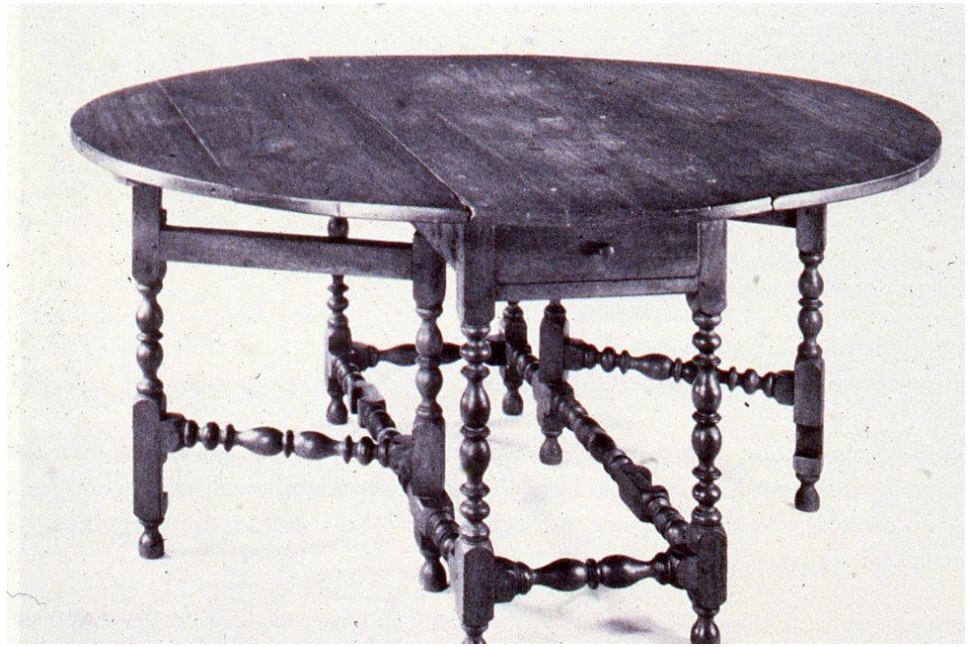
Boston MA-  
1710-25



New England  
1710-25



Table 1730-70 probably CT  
sassafras



Gateleg (dropleaf) Table  
1715-40  
Boston



Stretcher Table 1700-25 NC



# Dressing Tables



C 1720-30 MA





Drop  
pulls

Trumpet  
turnings



High Chest  
MA 1700-20  
Burlled veneer





# High Chests



# JAPANNED FURNITURE

1710-1820

- *1688 London book on japanning*
- *designs of Japan, China, India (Oriental craze)*
- *Boston=center in US*
- *painters rarely cabinet makers*
- *Used gesso, paint, shellac, gold leaf*





Japanned  
High Chest  
1710-40  
Boston  
MA



**QUEEN ANNE STYLE 1730-1760 (court 1702-14)**

- *Curves -cabriole leg, scroll pediment*
- *shaped aprons, splats, arms, stretchers, and crests*
- *scalloped shells*
- *regions: Boston, Newport, Philadelphia, NY*
- *stretchers on chairs in New England, esp. with pad feet*
- *Philadelphia—through tenons, trifold feet*
- *New York—slipper feet,*
- *RI, CT, NY, PA—ball + claw feet*
- *Tilt-top introduction, card tables appear (but rare)*
- *Woods: walnut, cherry, maple, mahogany*
- *japanning decoration*

Philadelphia  
1730-50



Eastern MA  
1725-50







Philadelphia c 1740-60  
Trifold foot



Philadelphia





NY 1740-60



Philadelphia c. 1730  
cherry



RI 1730-50





Tilt-top Stand c1765  
Philadelphia, Mahogany



Tea Table



Tilt-top stand  
Salem MA  
1784  
*John Gavet*

Card Table 1730-60 Boston  
Needlepoint inset



Gaming table c. 1750-  
60 Mahogany (at  
CMA)



# DRESSING TABLES



Connecticut  
1770-90



Boston 1725-40

Philadelphia 1725-40



1725 Salem

## High Chests



1739 Boston *Ebenezer Hartshorn*



Probably Newport RI 1750-70





**Desk &  
Bookcase  
1725-40  
Boston**



inlay







**High Chest  
japanned  
1725-50**



*John Pimm /Thomas Johnson*  
High Chest 1740-50 Boston



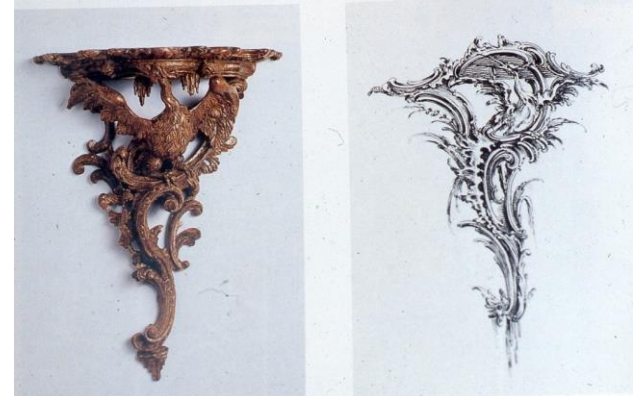
*Robt Davis/Stephen Whiting*  
High Chest 1733-45 Boston

# CHIPPENDALE

1755-90

definition of rococo: flowers, shells, rocks, ribbons, leaves, gadrooning, acanthus leaves, arches, quatrefoils, C & S scrolls

- *“Chinese, Gothic & Modern taste”*
- *Thomas Chippendale in London, Gentleman & Cabinetmakers Director 1754, 1755*
- *By 1762 in Philadelphia= leading center for this style*
- *Woods: mahogany, walnut, cherry, maple*
- *Heavy carving, no veneer, highly figured wood*
- *Feet: ogee bracket or ball+claw or Marlborough on straight legs*
- *Scrolled pediments often with rosette (sometimes triangular pediment)*
- *Japanned frequently, later block fronting, bombe form*
- *Broader proportions, trapezoidal seat, ears on shoulders*
- *Angular, not as many curves, pierced splats*







Ball & Claw foot



Bracket Foot



Marlborough Leg

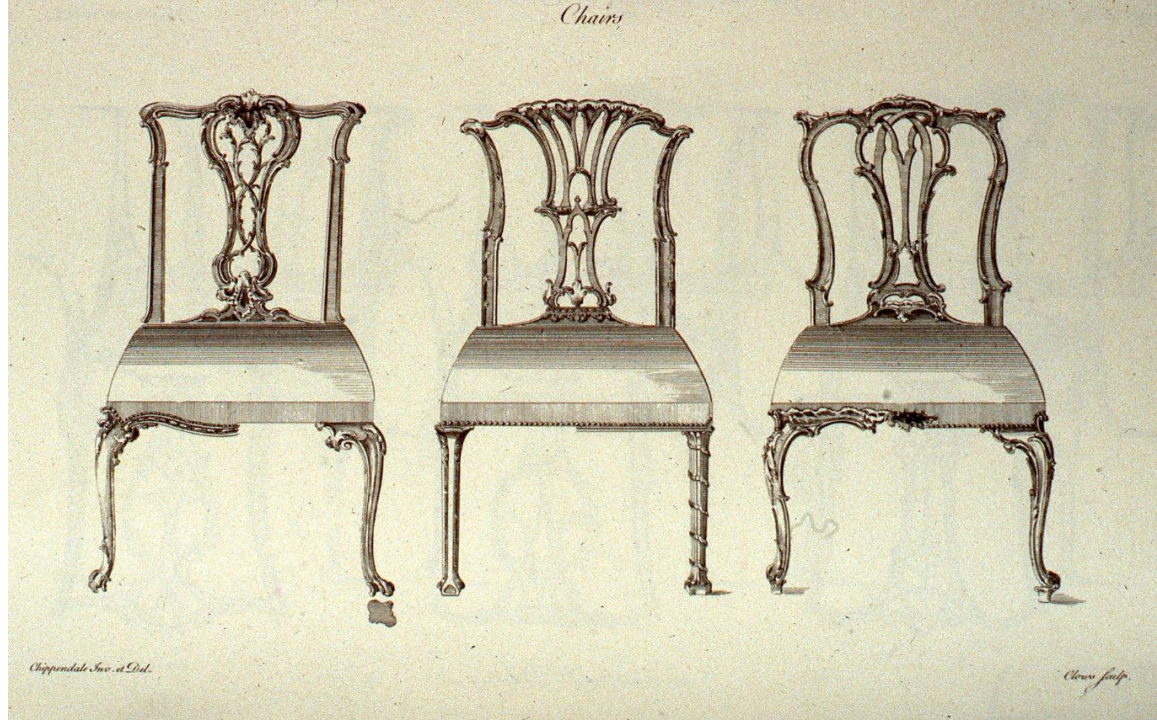


Metropolitan Museum in NY  
American Wing, Chippendale Gallery



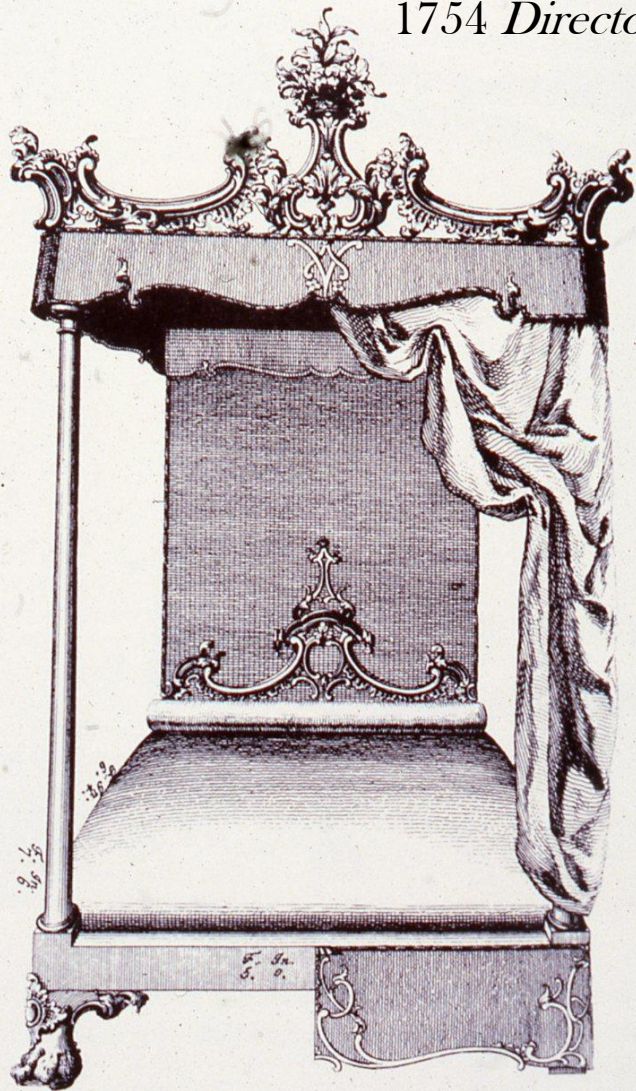


*Chairs*





Thomas Chippendale  
Design for bedstead  
1754 *Director*



140d. Design for a Bed with a Festoon Curtain. Chippendale, *The Director*, 1st ed., 1754, pl. 27. Society for the Preservation of New England Antiquities Library.





# Brasses



Bail handle

Philadelphia PA



Boston MA





Sofa 1763-71  
Philadelphia for  
Cliveden



Easy Chair 1765-75  
Philadelphia  
Benj. Randolph



1770 Philadelphia  
For Cadwalader family  
hairy paw  
*Thomas Affleck*





## Looking Glasses

England  
sold Boston

Mahogany  
c. 1770







Piecrust Tilt-top  
Tea Tables  
Philadelphia

c1760-1790





Card Table 1760-85  
New York , Mahogany



Gadrooning on skirt







Gratz High Chest 1769  
Philadelphia PA

Dressing Table  
1769





Philadelphia



E Windsor CT



VanPelt high chest  
c1765 Phila



CT Valley



## Bombe form (kettle shape)



Chest-on-chest 1782 Boston



Salem c1780

Desk + Bookcase 1770-92





Newport RI block and shell front  
Townsend/ Goddard shops





# DUTCH

1624- 1860

- *From Netherlands, primarily to NJ, Long Island, New Amsterdam (NYC), Hudson River Valley*
- *popular form = kas (wardrobe)*
- *popular decoration = paint, especially grisaille (gray + white)*
- *ovolo moldings and cross stretchers*



Dutch Room, American Wing,  
Met NY





Room at  
Brooklyn  
Museum NY  
1740-60  
Woodbury LI, NY





Kas, 1700-40  
Middletown NJ







Kas, Hudson River Valley NY c. 1700-1730 (Kingston)



Kas, Hudson Valley early 18c



Kas, painted green over brick red, NY Dutchess Co 1715-50



19<sup>th</sup> century Blanket Chest





## PENNSYLVANIA GERMAN 1750-1870

- German immigration during unrest in Germany
- Immigrated to NY, NC, and PA, esp Philadelphia, then outward to Lancaster Co, PA and to WV and OH
- Painted furniture, usually on tulip poplar
- Tri-partite designs (3 part)
- Use of hex signs
- Germanic construction—front dovetails
- Popular form: dower chest with fracture (paper documents decorated and glued in)
- A.k.a. Pennsylvania Deutsch



## Exhibit at Winterthur







**Fraktur**  
(Marriage Contract)





Cupboard, southeastern PA 1785-90



Cupboard, PA German c. 1760-80



Schrank 1790 Lancaster Co PA painted pine







Slant top desk 1834  
Schuylkill Co, PA

